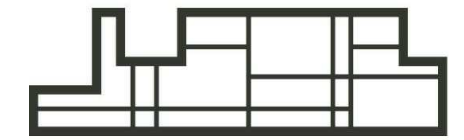


Pomarón

Urbanización

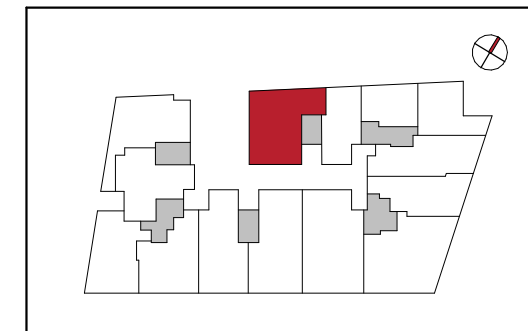


Opción 1

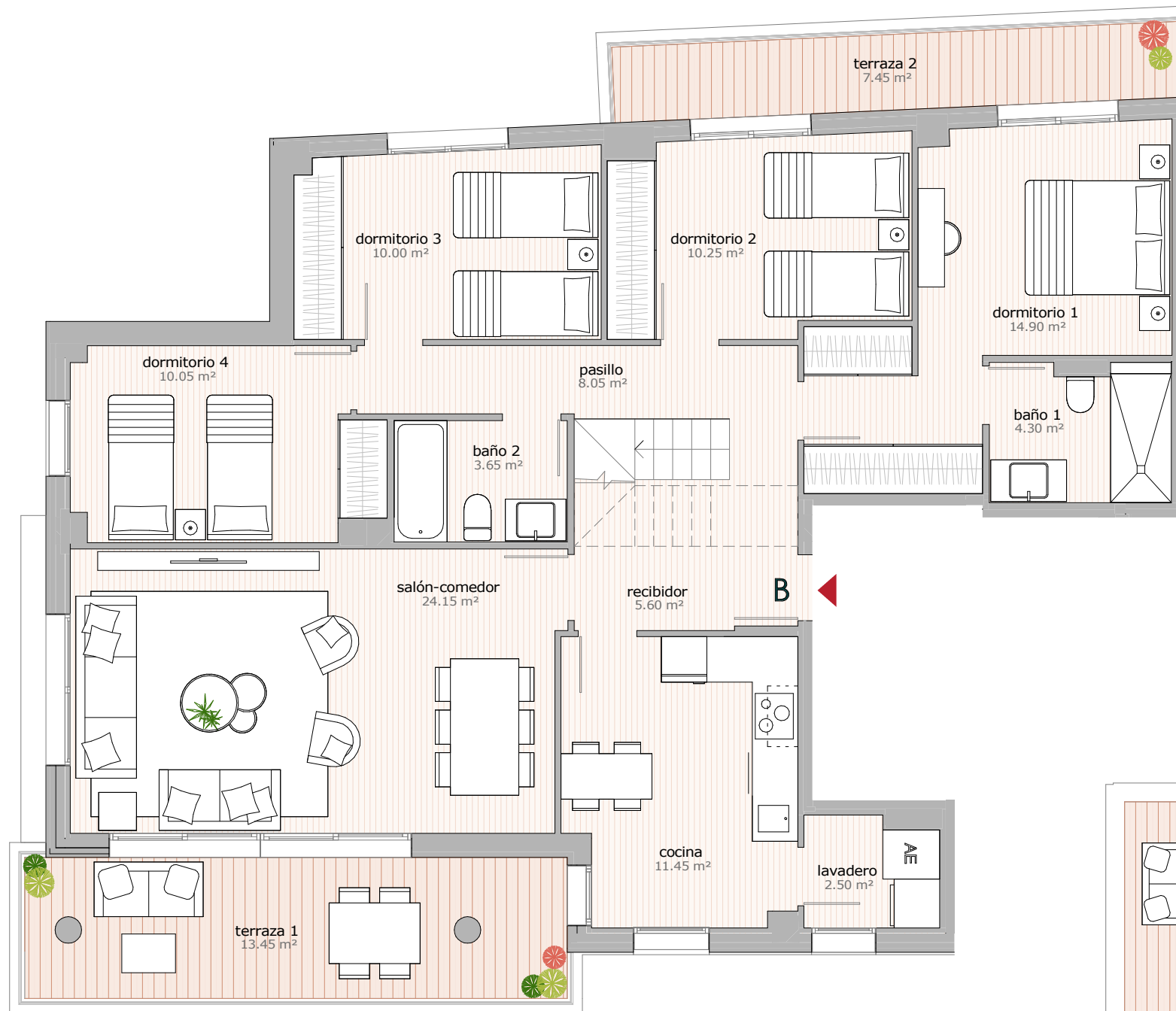
T45A

Esc 6 - B

Escala 1/75



Planta 4ª



Superficies

| | |
|--------------------------|-----------------------------|
| recibidor | 5.60 m ² |
| salón-comedor | 24.15 m ² |
| cocina | 11.45 m ² |
| lavadero | 2.50 m ² |
| pasillo | 8.05 m ² |
| dormitorio 1 | 14.90 m ² |
| baño 1 | 4.30 m ² |
| dormitorio 2 | 10.25 m ² |
| dormitorio 3 | 10.00 m ² |
| dormitorio 4 | 10.05 m ² |
| baño 2 | 3.65 m ² |
| despacho | 15.05 m ² |
| baño 3 | 3.60 m ² |
| sup. útil cerrada | 123.55 m² |
| terraza 1 | 13.45 m ² |
| terraza 2 | 7.45 m ² |
| terraza 3 | 102.80 m ² |
| sup. útil abierta | 123.70 m² |



GESTIÓN
común